

# จากบัญชีการเงิน สู่ บัญชีคาร์บอน ด้วย SAP Business One

สร้างองค์กรให้ธุรกิจยั่งยืนด้วยการจัดการคาร์บอน  
และการใช้เทคโนโลยี ERP ที่ทันสมัย



- 13:30 Registration
- 14:00 Welcome Speech & Introduction of Sundae Solutions
- 14:10 จากบัญชีการเงินสู่บัญชีคาร์บอน
- 14:20 การบริหารบัญชีการเงินด้วย SAP Business One
- 14:35 การบริหารบัญชีคาร์บอนที่ทุกองค์กรต้องรู้
- 15:00 กรณีศึกษาจาก บัญชีการเงินสู่บัญชีคาร์บอนของ SAP Business One
- 15:20 โปรโมชันพิเศษ และ Q&A / Networking





# จากบัญชีการเงิน สู่ บัญชีคาร์บอน ด้วย SAP Business One

สร้างองค์กรให้ธุรกิจยั่งยืนด้วยการจัดการคาร์บอน  
และการใช้เทคโนโลยี ERP ที่ทันสมัย

## SPEAKERS



**Mr. Navik Numsiang**  
CEO

ผู้ให้บริการโซลูชันสําทงธุรกิจที่มุ่งสร้างประสพการณ์  
ของลูกค้าค้ดี มีความชำนาญในธุรกิจ CRM/CX, ERP และ  
ดิจิทัลมากกว่า 15 ปี



**Mr. Kittanan Tantiyamas**  
ERP Consultant

ประสพการณ์มากกว่า 20 ปีในฐานะที่ปรึกษาในการวางระบบ  
แอปพลิเคชันทางธุรกิจ ทั้งระบบ CRM และ ERP ให้องค์กรต่างๆ  
จนปัจจุบัน



**Ms. Suratchanee Thongkum**  
ที่ปรึกษาอาวุโส SAP Business One  
/ Consultant

ที่ปรึกษาการวางระบบบัญชีและ ERP ให้กับองค์กรต่างๆ  
ด้วยประสพการณ์มากกว่า 10 ปี จนปัจจุบันได้รับหน้าที่  
เป็นที่ปรึกษาอาวุโสของซอฟต์แวร์ SAP Business One

## SPECIAL GUEST



**Thanawat Chonghipatmongkol**  
Business Analyst at Gideon One Co., Ltd.

ผู้เชี่ยวชาญด้านพลังงานทดแทนและสิ่งแวดล้อม

# Introduction of Sundae Solutions





Snapshot

# Sundae at a Glance



**2002**

Founded



**CRM/CX - ERP - ESM/ITSM - RPA - BI**

Solutions



**10+**

Solution Partners & Certified



**50+**

Employees



**200+ in 10 Industries**

Customers & Industries



**ISO/IEC 29110-4-1**

Quality Certification

Some great companies we work with:





# Technology | Enterprise Applications

Sundae can provide a fully integrated business management system for your business, with Global Solutions at its core. We can truly provide a 360° solution for your business.

**CRM/CX/ Contact Center** | Customer Relationship Management/Customer Experience



**ERP & WMS** | Enterprise Resource Planning & Warehouse Management



**ESM/ ITSM** | Enterprise Service Management/ IT Service Management



**RPA** | Robotic Process Automation



**BI** | Analytics



*Sundae helps clients move from  
issue to outcome, with pace,  
certainty, and strategic agility.*

# Digital & Application Development

Sundae | Digital is an online marketing consulting and application development firm with proven experience in helping clients develop, implement, and manage leading-edge digital initiatives.

## Our Expertise

- Website and Mobile Application Development
- E-commerce | Magento and Woo Commerce
- B2B Ordering System
- Membership & Loyalty Platform | HubMember
- Omni-channel Development: Line OA, Email & SMS
- Marketing Solutions

*Helping our clients use the digital and new technologies to better find, understand, serve, and keep customers. We know that our most valuable assets are our clients and we understand that time is a valued resource.*





# Operation | Outsourced Services

Sundae | Operation has a key focus on Internet, Intelligence and Integration capabilities. Our services focused on both Pro-active (outbound) as well as Re-active (inbound) marketing initiatives and cover all the major Opportunity Touch points – Teleservices Contact Center, Internet, Email, Direct Mail, Advertising, SMS, etc.

**Our services includes:-**

## **S | DATABASE**

Database Marketing & Management | Database Development | Data Cleansing | CRM System

## **S | SELL**

Lead Generation | Customer Acquisition & Prospect Development

## **S | CARE & SUPPORT**

Maintenance and Support: | Customer Support & Helpdesk | Customer Retention

## **S | MARKETING & CONTENT**

Online Marketing Consulting | Email & SMS Marketing | Data Entry and Management



# Green Ledger: From Financial Accounting to Carbon Accounting



**Mr. Navik Numsiang**  
CEO | Sundae Solutions Co., Ltd.







# Introduction to Climate Change

1

## Warming Temperatures

Global temperatures have been steadily rising, driven by human-induced greenhouse gas emissions.

2

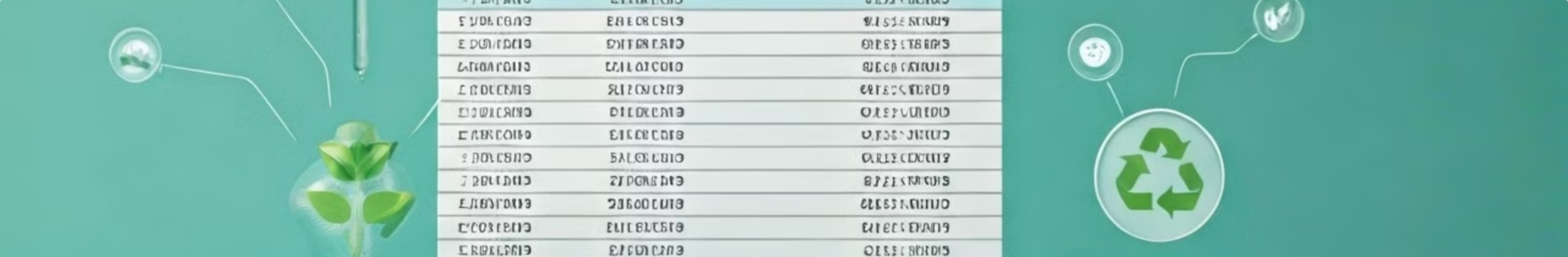
## Extreme Weather Events

Climate change has led to an increase in the frequency and severity of extreme weather events, such as hurricanes, droughts, and wildfires.

3

## Environmental Degradation

Ecosystems and natural habitats are being damaged, with dire consequences for biodiversity and human well-being.



# Business Decisions and Environmental Costs

## Environmental Impact

Businesses have a significant impact on the environment through their operations, supply chains, and product life cycles.

## Financial Considerations

Traditional financial accounting often fails to capture the full environmental costs associated with business activities.

## Integrated Approach

Integrating environmental and financial data can provide a more holistic view of a business's impact and performance.





# Benefits of the Green Ledger



## Strategic Alignment

Align business goals with sustainability objectives.



## Risk Management

Identify and mitigate environmental risks.



## Competitive Advantage

Enhance reputation and appeal to eco-conscious consumers.



## Financial Performance

Optimize costs and uncover new revenue streams.

# Thank You



**Mr. Navik Numsiang**  
CEO | Sundae Solutions Co., Ltd.





การบริหารบัญชีการเงินด้วย

# SAP Business One

Financial Accounting Management with SAP Business One





# SAP Business One **Overview**

# SAP Business One Overview

## SAP's best selling ERP solution by number of customers

Used by **70,000+**  
customers

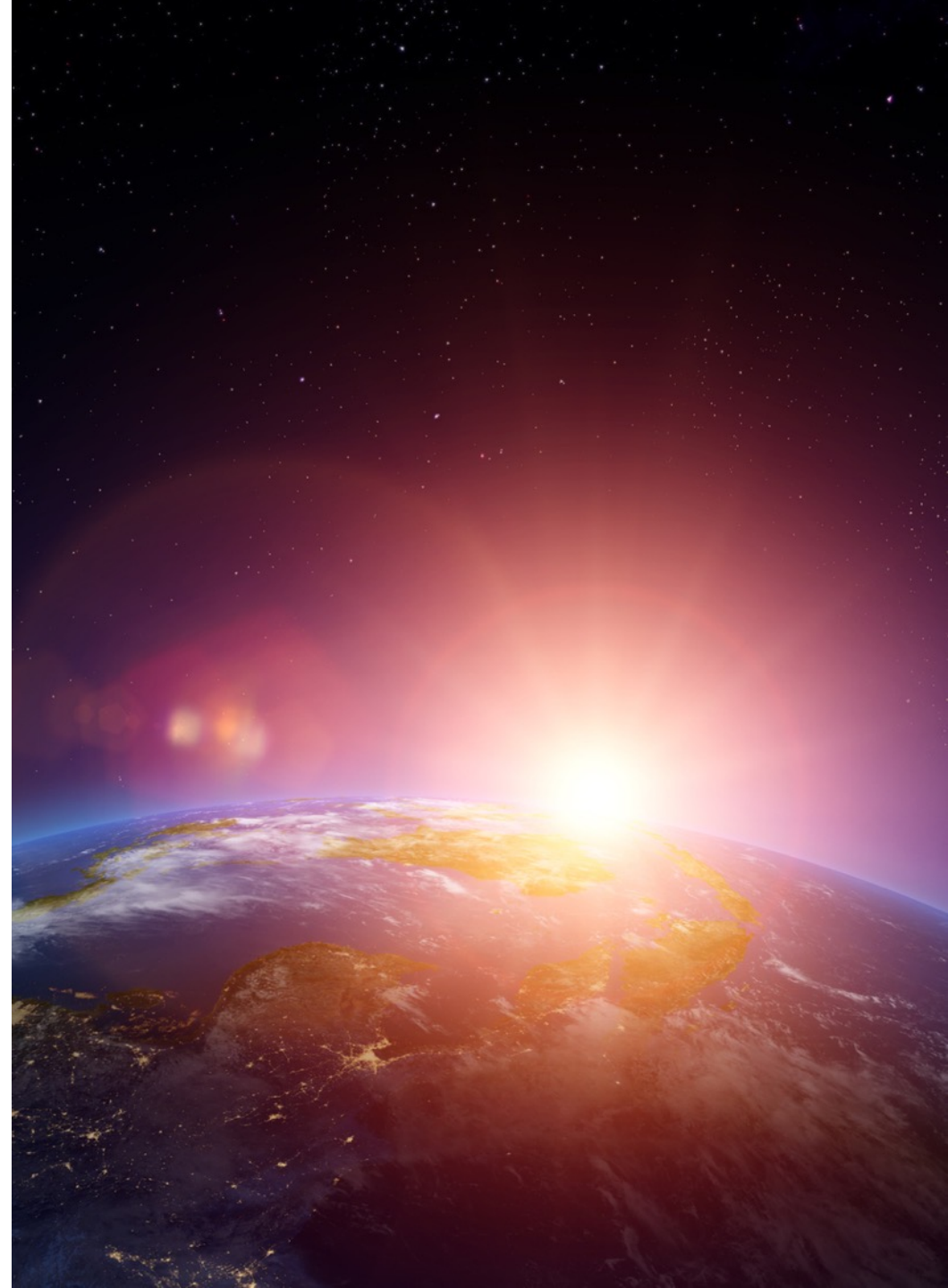
~**300** Software Solution  
Partners with **500+** solutions

Implemented by more  
than **850** Value Added  
Resellers worldwide

**360+** large enterprises are  
running SAP Business One  
in **5,600+** subsidiaries

Available as **50** country  
localizations and in **28**  
languages

SAP Business One is used  
in **>170** countries



# SAP Business One Overview

## SAP Business One used in more than 170 countries

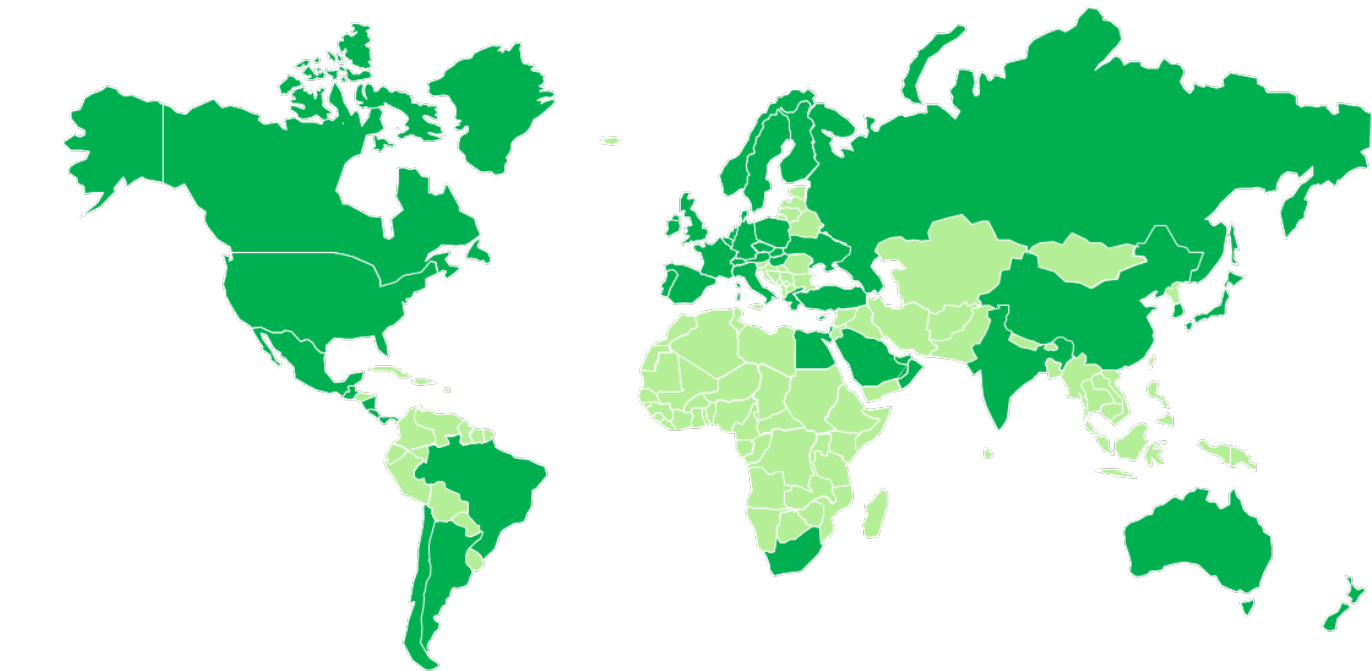
### Current localizations (50)

Argentina	Finland	Mexico	Slovakia
Australia	France	Netherlands	South Africa
Austria	Germany	New Zealand	South Korea
Belgium	Greece	Norway	Spain
Brazil	Guatemala	Oman	Sweden
Canada	Hong Kong	Panama	Switzerland
Chile	Hungary	Poland	Turkey
China	India	Portugal	Ukraine
Costa Rica	Ireland	Puerto Rico	United Arab Emirates
Cyprus	Israel	Qatar	
Czech Republic	Italy	Russia	United Kingdom
Denmark	Japan	Saudi Arabia	United States
Egypt	Lebanon	Singapore	

### Countries making use of localizations

Customers in more than 170 countries use localization of other countries, own customization, or partner solution

\*Convenient option to make additional languages available is using a partner solution (for some countries bundled with functional add-ons) or to define customer specific UI terms using the Custom Language Tool as detailed in SAP Note [1757764](#).



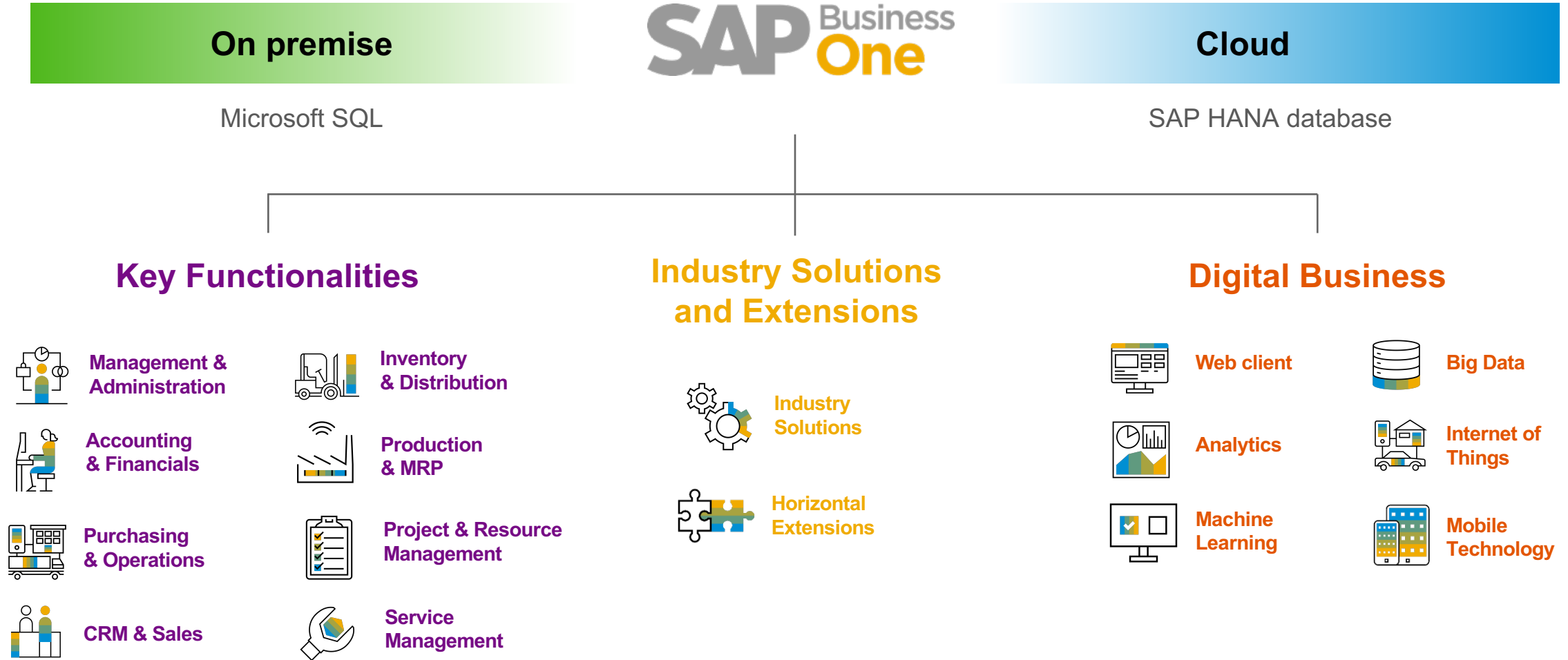
### Current system languages (28)\*:

Arabic, Chinese (simplified/traditional), Czech, Danish, Dutch, English (UK/U.S.), Finnish, French, German, Greek, Hebrew, Hungarian, Italian, Japanese, Korean, Norwegian, Polish, Portuguese (Brazil), Portuguese, Russian, Slovak, Spanish (Latin America), Spanish, Swedish, Turkish, and Ukrainian



# SAP Business One Overview

## Value Proposition

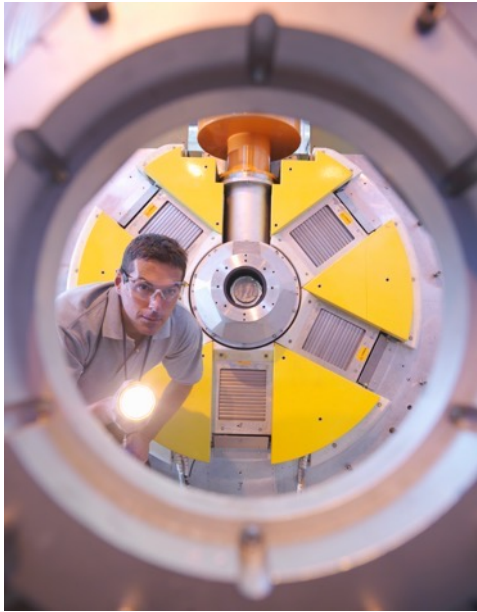


# SAP Business One Overview

## Industry-specific Solutions

Extend to meet your specific business and industry challenges.

Software solution partners have the industry expertise and customer focus to offer industry-specific and horizontal solutions



### Industry Solutions

- Automotive
- Consumer Products
- Engineering
- Food & Beverage
- Healthcare
- High-tech
- Industrial Machinery/Components
- Retail
- Wholesale Distribution



### Horizontal Extensions

Go beyond generic business needs by extending:

- Accounting
- Enhanced CRM
- Payment Processing
- Productivity
- Mobility
- Reporting
- Service

# SAP Business One **Key Functionalities**



# SAP Business One Key Functionalities

## Management & Administration

- User administration
- Authorizations
- Multiple currencies
- Exchange rates
- Multiple posting periods
- Multi-branch
- Data import
- Opening balances
- Approval processes
- Calendar
- Microsoft Office integration
- Mobile Interaction
- Recurring transactions
- Drop Ship
- GDPR



# SAP Business One Key Functionalities

## Accounting & Financials

- Chart of accounts
- Journal entries
- Posting templates
- Recurring postings
- Financial reports
- Budget management
- Cost accounting
- Incoming payments
- Outgoing payments
- Payment run
- Bank statement processing
- Checks & credit cards
- Deferred payments
- Account reconciliation
- DATEV / ELSTER (DE)
- Fixed Assets
- SEPA



# SAP Business One Key Functionalities

## Purchasing & Operations

- Purchase request
- Purchase quotations
- Web-enabled RFQ
- Purchase orders
- Goods receipt POs
- Goods returns
- A/P Invoice
- A/P Reserve Invoice
- Down-payment Invoice
- Down-payment request
- Cancel Marketing Documents
- A/P credit memos
- Landed costs
- Intrastat
- PEPPOL





# SAP Business One Key Functionalities

## Sales & Service

- Opportunity and pipeline Mgmt.
- CRM
- Campaign Mgmt.
- Blanket agreements
- Quotations
- Sales orders
- Deliveries & Returns
- Invoices
- Dunning & Customer Mgmt.
- Gross profit calculation
- Service Mgmt.
- Service planning
- Customer interactions tracking
- Equipment card handling
- Service Dashboards
- Service contracts
- Human resource integration
- Knowledge database
- Service calendar
- Service call processing



# SAP Business One Key Functionalities

## Inventory & Distribution

- Item management
- Item lists
- Price lists
- Goods receipts
- Goods issues
- Inventory transactions
- Transfers
- Serial number mgmt
- Batch number mgmt.
- Price lists in multiple currencies
- Special prices
- Period and volume discounts
- Pick and pack
- Recurring transactions
- Inventory Tracking
- Bin Location
- Multiple Measurements
- Inventory Counting



# SAP Business One Key Functionalities

## Production & MRP

- Bills of material
- Item Sets
- Production orders
- Goods issues
- Goods receipts
- Production Dashboards
- GL Account Determination
- Life Cycle Mgmt.
- Item cost calculation
- Forecasts
- MRP
- Make to order
- Order recommendations
- Production Routing





# SAP Business One Key Functionalities

## Project & Resource Management

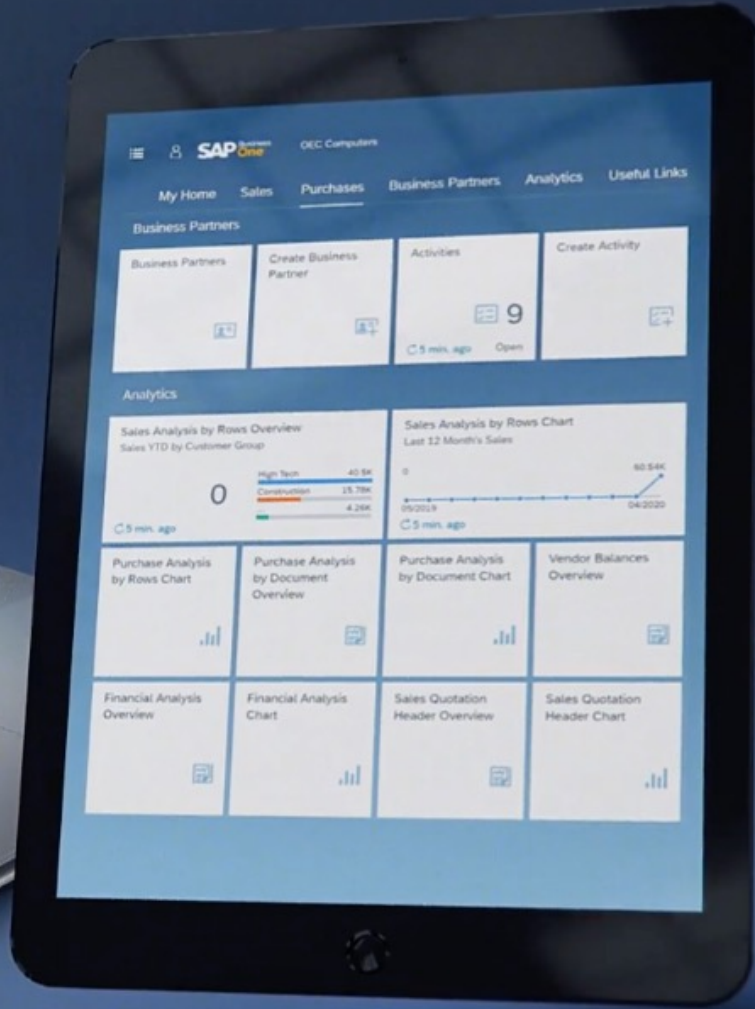
- Project management
- Project stages
- Stage dependencies
- Sub-projects handling
- Project Time Reporting
- Internal project handling
- Employee master data
- Time sheet entries
- Resource master data
- Resource capacity planning
- Gantt chart capacity viewing





# **The Digital Business** with SAP Business One

# The Digital Business with SAP Business One Web Client



## Optimize user experience

- Based on SAP Fiori design principles encapsulating SAP Business One core processes and business logic
- Integration with Microsoft 365 (Excel, Word), Outlook 365 and MS Teams

## The Best of All Worlds

- Sophisticated analytic charting capabilities and predefined analytics content
- Flexible deployment options - **on-premise** and in the **cloud**, can be used side by side with the SAP Business One client



# The Digital Business with SAP Business One Analytics

## **SAP Business One, version for SAP HANA**

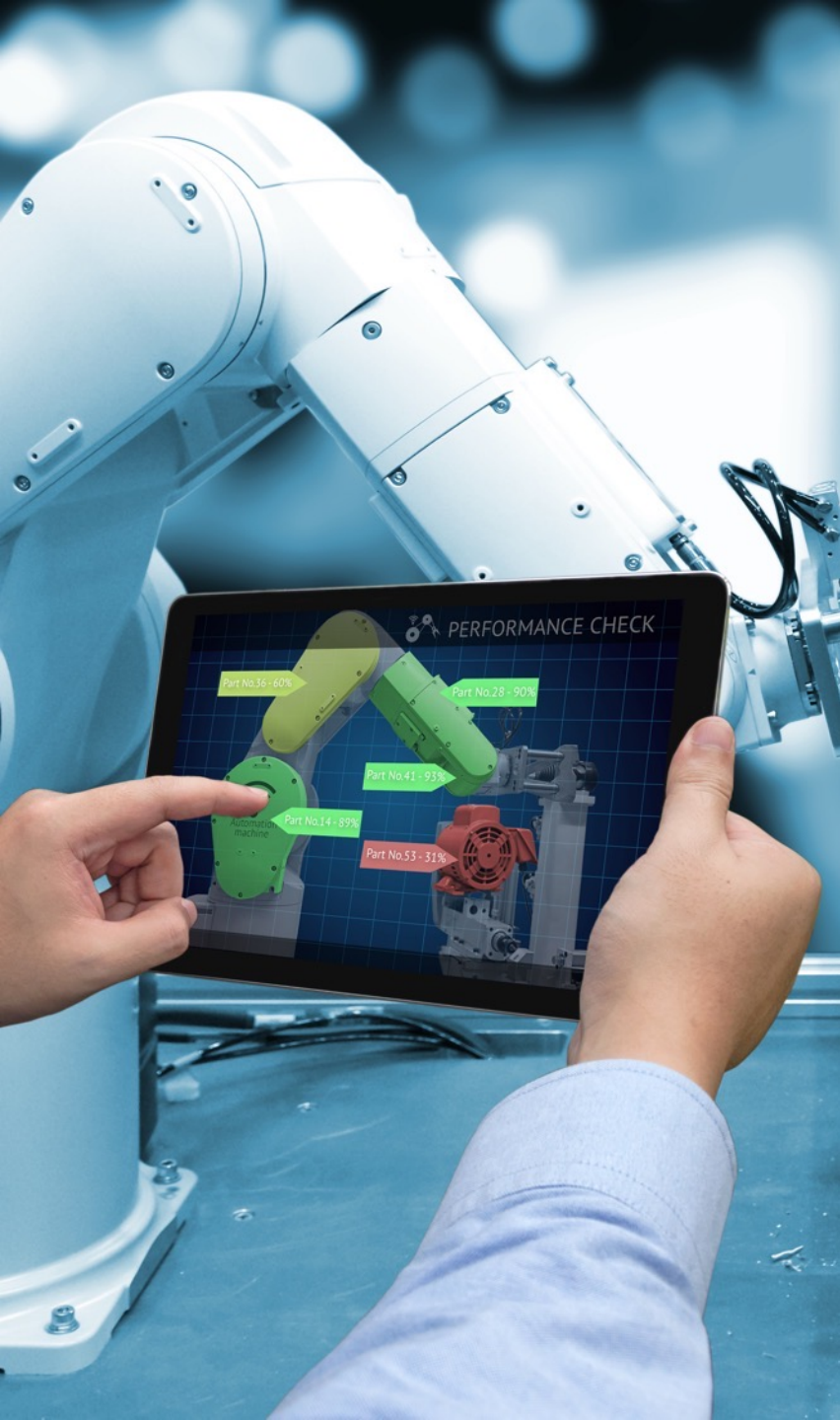
- Dashboards and KPIs
- Advanced Dashboards
- Interactive Analysis
- Semantic Layer
- Pervasive Analytics Designer

## **Data Visualization and Analysis**

- SAP Analytics Cloud

## **Business Intelligence Reporting**

- SAP Crystal Reports
- Excel Report Designer
- Analytical Portal



# The Digital Business with SAP Business One Machine Learning

## Machine Learning for SAP Business One, version for SAP HANA

- Sales Recommendation
- Intelligent Forecast
- SAP SMB Market Place\*
- Order to Cash Automation\*

## Image Recognition and Conversational AI

- Time Recording\*
- Image Recognition\*

\*Important Note:

This is not an SAP Business One feature and it is not part of the product or its roadmap. Therefore there is no official SAP support for this implementation. This is simply a prototype.





# The Digital Business with SAP Business One **Big Data**

## **Big Data in SAP Business One, version for SAP HANA**

- Cash Flow Forecasting
- Advanced Available-to-Promise
- Enterprise Search
- Predictive Analysis
- Intelligent Forecast



# The Digital Business with SAP Business One **Internet of Things (IoT)**

## **Internet of Things in SAP Business One**

- Factory Automation\*
- Cold Storage\*

**\*Important Note:**

This is not an SAP Business One feature and it is not part of the product or its roadmap. Therefore there is no official SAP support for this implementation. This is simply a prototype.



# The Digital Business with SAP Business One **Mobile Technologies**

## **Key Benefits**

- Instant access for employees who need to view and update data from anywhere
- Integrated analytics enable decisions to be made in real time
- Comprehensive sales and service functions
- Increase productivity of employees on the road

## **SAP Business One Sales App**

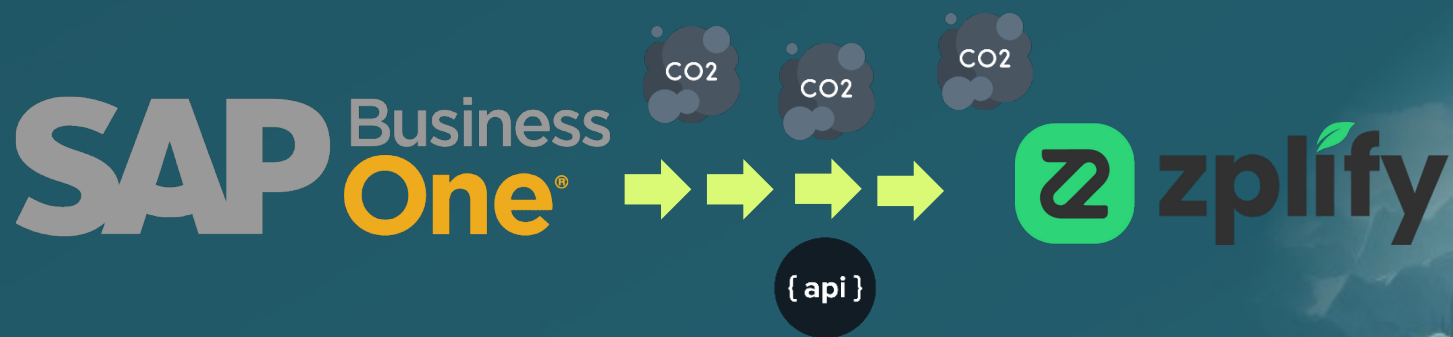
- Handle effectively your sales activities anywhere, anytime

## **SAP Business One Service App**

- Manage and fulfill your service anywhere, with integrated scanner, map, personalized signature and more



# From Financial Accounting to Carbon Accounting





# Thank You



**Ms. Suratchanee Thongkam**

Senior ERP Consultant  
Sundae Solutions Co., Ltd.

**Mr. Kittanan Tantiyamas**

ERP Consultant  
Sundae Solutions Co., Ltd.



# การบริหาร บัญชีคาร์บอน

## ที่ทุกองค์กรต้องรู้

How to do Carbon Accounting



**Mr. Thanawat Chonghipatmongkol**

Expert in Renewable Energy and Environment

Business Analyst at Gideon One Co., Ltd.







# How to do CARBON ACCOUNTING

---

[www.zplify.com](https://www.zplify.com)



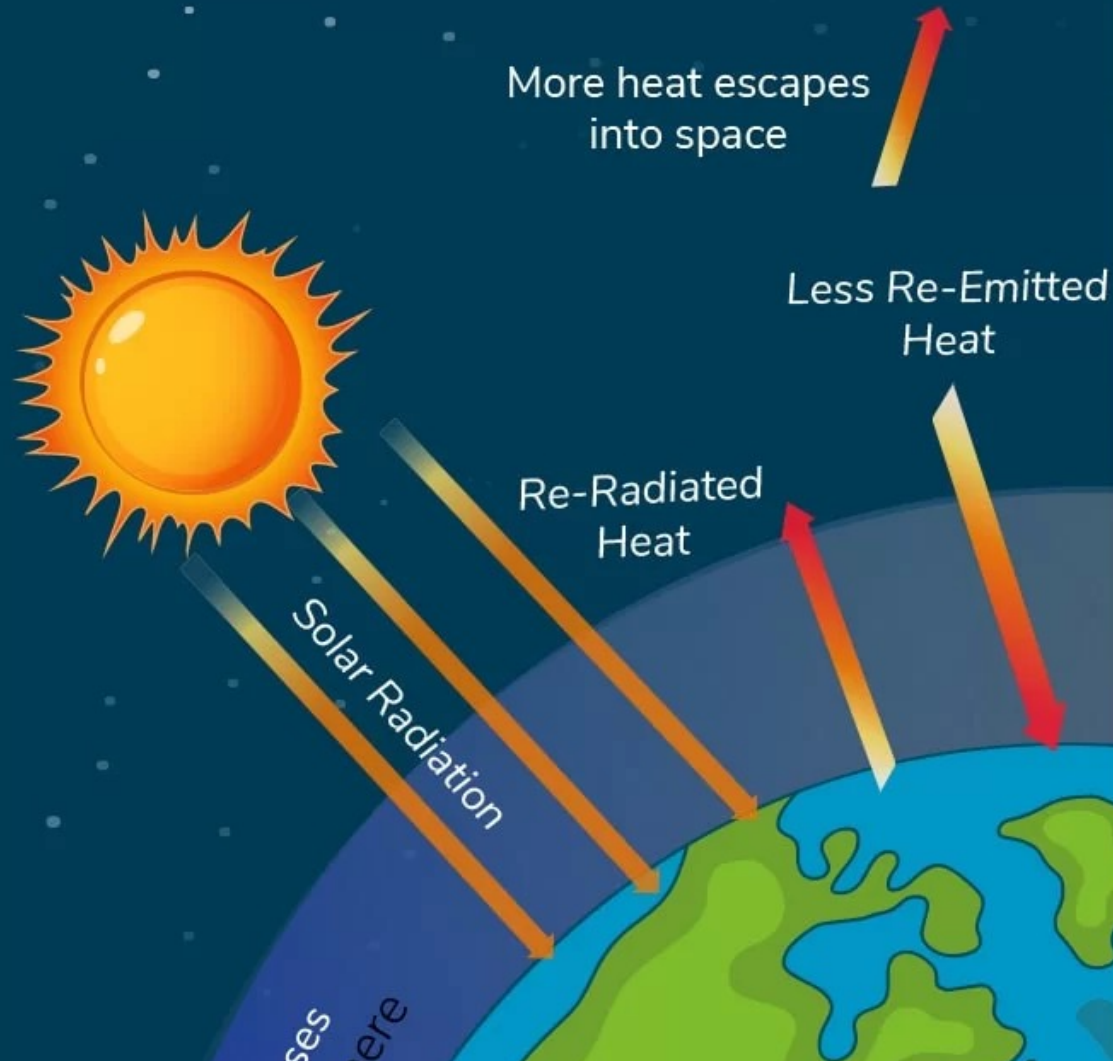


# ABOUT US

Zplify: Zero + Simplify is our motto. We provide end-to-end emissions management solutions to help organizations measure, report, and reduce their emissions efficiently. Our platform, along with our training and advisory services, makes it easy to start your sustainability journey.

Trusted by over 30 sustainability leaders in the financial and manufacturing sectors, Zplify is committed to helping Thailand achieve Net Zero by 2050. We also empower organizations to track their emissions by offering a free version of our platform with no time limits.

## Natural Greenhouse Effect

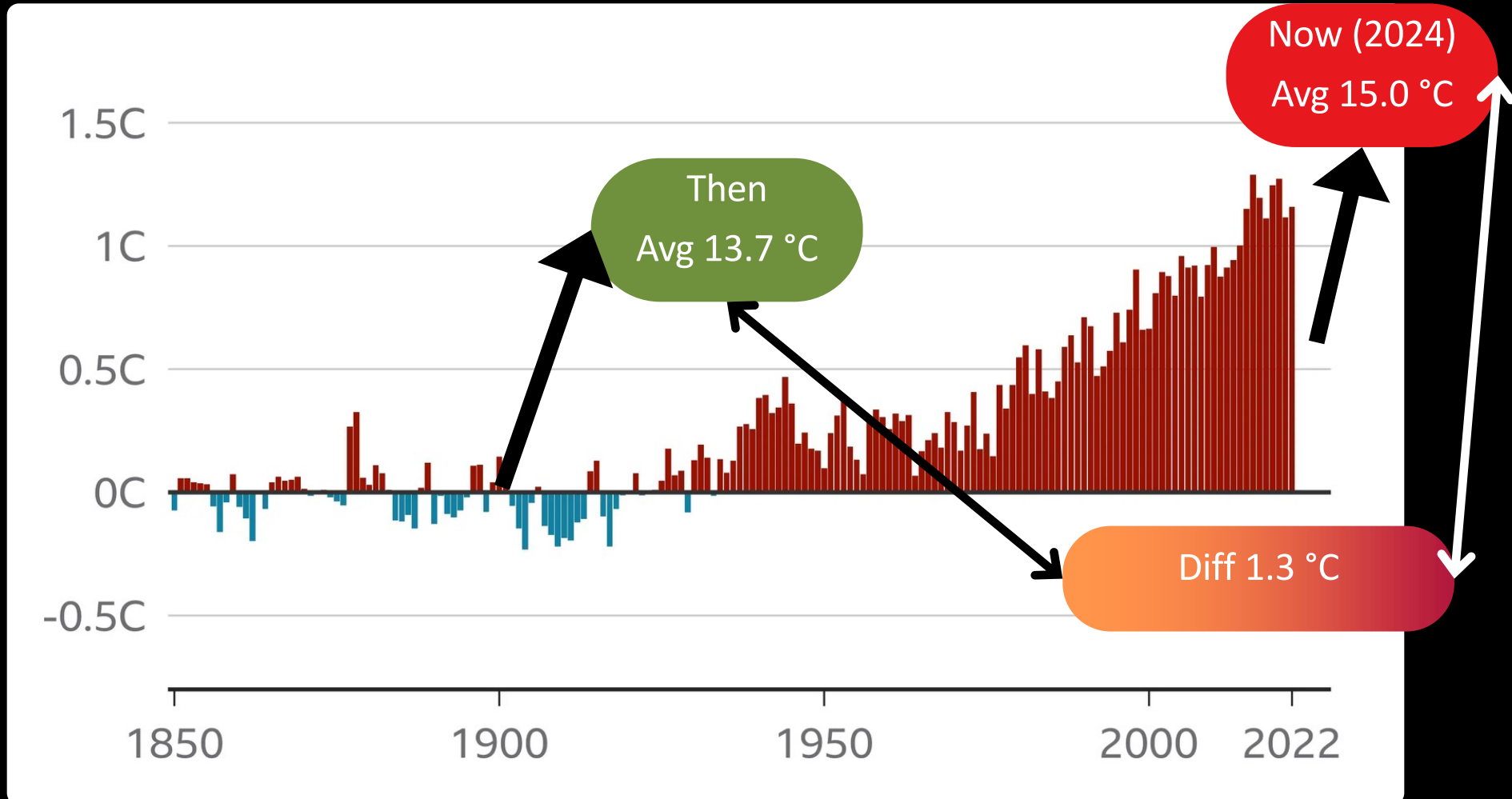


## Human Enhanced Greenhouse Effect



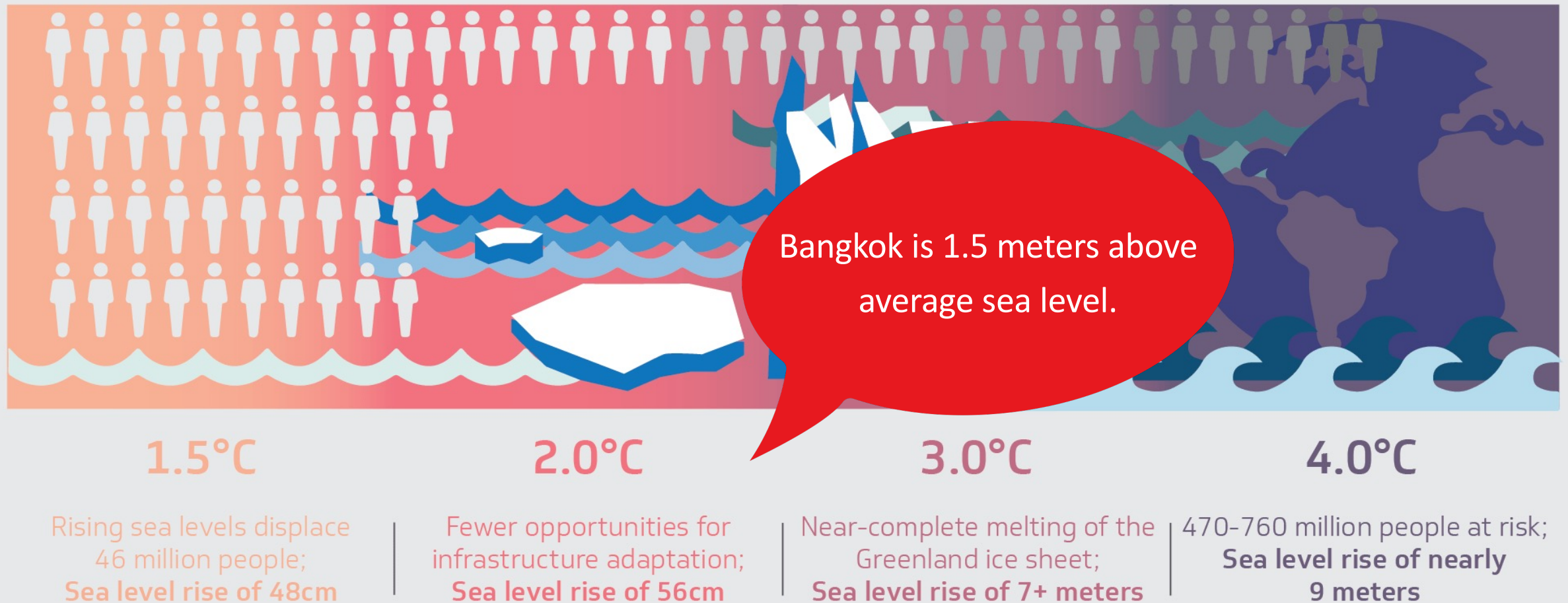
# How **bad** is it for current situation?

Change in annual average global temperature from pre-industrial levels (1850 - 1900)





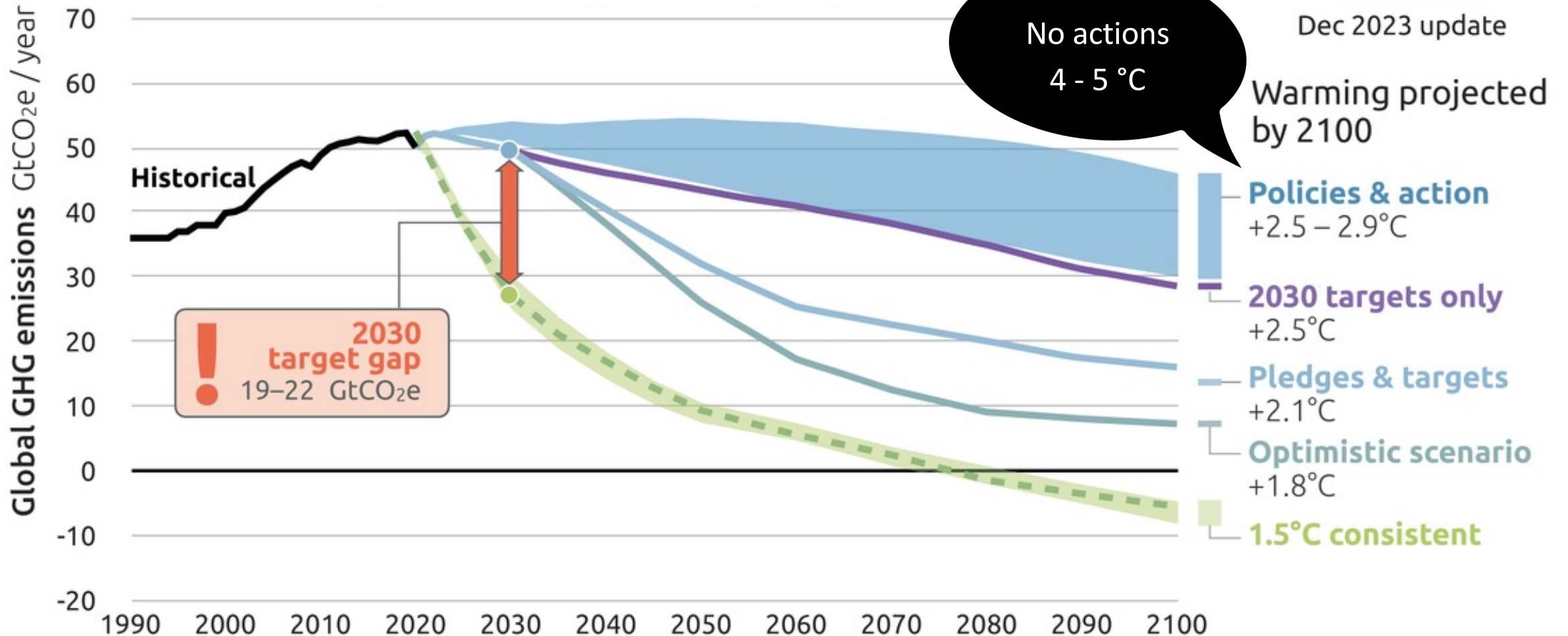
# Impacts on sea level rise



# 2100 Warming Projection



Dec 2023 update



## ทำตาม กฎหมาย/ข้อบังคับ

- **EU CBAM** ผู้นำเข้าสินค้าไปยังยุโรป เสียภาษีคาร์บอนในหมวดสินค้าที่กำหนด
- **SEC OneReport** บริษัทจดทะเบียนในตลาดหุ้น ต้องรายงานการปล่อย GHGs
- **พรบ. โลกร้อนของไทย** รายงานการปล่อย GHGs, ภาษีคาร์บอน, ETS

## เพิ่มความสามารถใน การแข่งขัน

- **ดึงดูดนักลงทุน** เช่น การได้ลิสต์อยู่บน DJSI หรือ THSI, ธนาคารจัดธุรกิจที่จะได้เงินลงทุนมากขึ้น ตาม Taxonomy
- **ดึงดูด Value Chain**
- **ดึงดูดลูกค้า**
- **ดึงดูดพนักงาน**
- **เพิ่มประสิทธิภาพ** ของกระบวนการผลิต



# ปี 2565 บริษัทจดทะเบียนไทยโดดเด่นด้านความยั่งยืนระดับโลก

## เข้าดัชนี **DJSI** สูงสุดในอาเซียนต่อเนื่องเป็นปีที่ 9



Newly added

DJSI = Dow Jones Sustainability Indices

[www.setsustainability.com](http://www.setsustainability.com)

**SET** Make it Work for Everyone

© 2024 Gideon One. All Rights Reserved.

Ref: <https://www.setsustainability.com/libraries/1155/item/-dow-jones-sustainability-indices-disi?category=21&type=&search=>

# GHGs to... Scope 1,2,3 Emissions

**Greenhouse Gas Protocol**, the most widely used and internationally recognized greenhouse gas accounting standard, **divides emissions into three scopes**.

Can be offsetted by  
**Carbon Credit**

## Scope 3

INDIRECT

### Upstream activities



## Scope 1

DIRECT



## Scope 2

INDIRECT

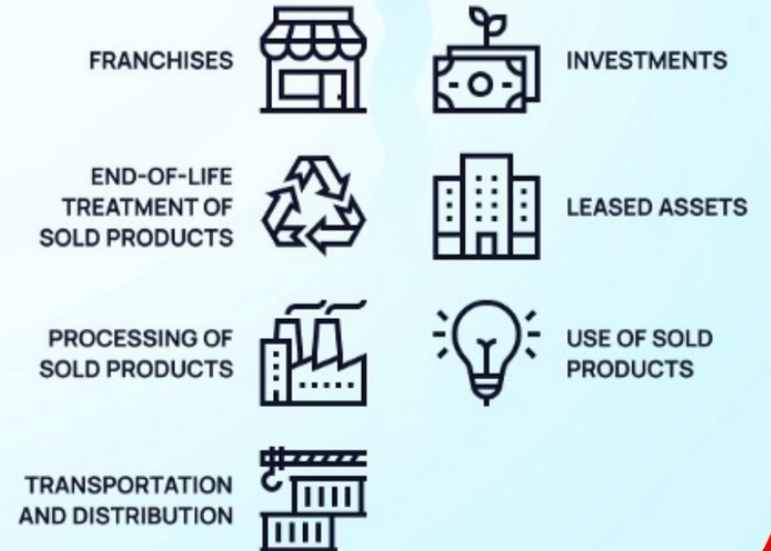
Using  
Renewable  
Energy (RE)  
will not  
cause  
emission  
since the  
beginning



## Scope 3

INDIRECT

### Downstream activities





# Main human activities causing global warming

Burning Fossil Fuels



CO<sub>2</sub>, CH<sub>4</sub>, N<sub>2</sub>O

Deforestation



CO<sub>2</sub>

Industrial Process



All GHGs

Agriculture



CH<sub>4</sub>

Waste Management



CO<sub>2</sub>, CH<sub>4</sub>

Transportation



CO<sub>2</sub>, CH<sub>4</sub>, N<sub>2</sub>O



# Greenhouse Gases แต่ละก๊าซมาจากไหน

CO<sub>2</sub>

การเผาไหม้เชื้อเพลิง (มีปริมาณมากที่สุดในชั้นบรรยากาศ)

CH<sub>4</sub>

การย่อยสลายของก๊าซชีวภาพ การเพาะปลูกข้าว และระบบย่อยอาหารของสัตว์

N<sub>2</sub>O

การเผาไหม้เชื้อเพลิงในภาคพลังงาน ปฏิกิริยาเคมีในการผลิตภาคอุตสาหกรรม การจัดการมูลสัตว์ การใช้ปุ๋ยเคมี การจัดการของเสีย

HFCs

สารทำความเย็นในเครื่องปรับอากาศ สารในอุตสาหกรรมโฟม และสารดับเพลิง

PFCs

การหลอมอะลูมิเนียมและการผลิตสารกึ่งตัวนำไฟฟ้า

SF<sub>6</sub>

อุตสาหกรรมยางรถยนต์ ฉนวนไฟฟ้า สารกึ่งตัวนำไฟฟ้า แมกนีเซียม

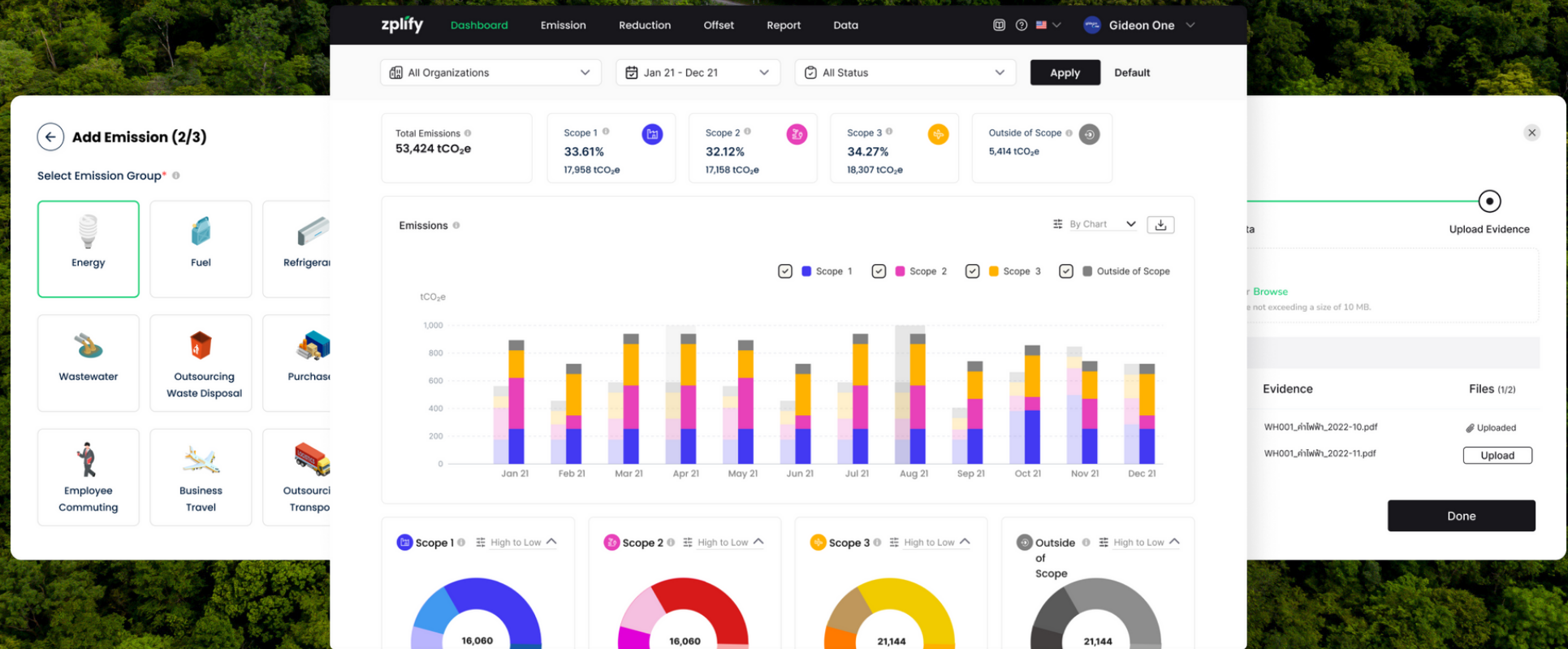
NF<sub>3</sub>

อุตสาหกรรมวงจรไฟฟ้า โซลาร์เซลล์ จอแอลซีดีในโทรศัพท์มือถือและโทรทัศน์





## Emissions Management Platform & Services



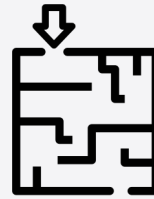


# Pain Points



## Expensive

- Consulting cost
- Verification cost
- Resource and time Constraints



## Complexity

- Know-how in sustainability
- Complex calculation
- Changing regulations, reporting frameworks, emission factors, or reporting guidelines



## Data

- Data collection & accuracy
- Limited accessibility to data from 3rd parties (suppliers, partners, or customers)



# Data Automation



Free up your team's time for work that truly creates an impact

## Automated Emission Calculation across Scope 1, 2, & 3

- Auto-convert raw data into emissions using up to date emission factors from Thai and global databases
- Add your own emission factors based on your supplier specific

← Add Emission (2/3)

Select Emission Group

Energy

Fuel

Refrigerants

Fire Extinguishing

Other Fugitive Emissions

Wastewater

Outsourcing Waste Disposal

Purchases

Water

Septic Tank

Employee Commuting

Asset Name	Emission Group	Emission Source	Amount	Unit	Emissions (CO <sub>2</sub> e)
Busir Forklift AB1234	Fuel	Disel B7	120.00	litre	358.82 kg

Scope 1: 305.85 kg  
Scope 3: 33.15 kg  
Outside of Scope:  
19.82 kg

## Seamless Data Integration

- Connect your electricity bill directly from PEA
- Data retrieval from your software systems via ERP, Fleet card, and API Access.

zplify

DashboardEmissionReductionOffsetReportData

InputImport FileAPIEco-Efficiency

← PEA

Next Data Fetch: 20 Apr 2024

E-bill services make record-keeping easier during verification. Click [here](#) to register.

QFilter

+ Request Connection (6/7)

Connection ID	Organization	Site	Site Status	CA Number	PEA Number	Status	Last Fetch
PEA-06	Gideon One	Warehouse 1	Leased in	024594940246	3453454	Pending	-
PEA-05	Gideon One	Warehouse 1	Leased in	024594940246	3453454	Rejected	-
PEA-04	Gideon One	Building 1	Owned and used	024598400246	3053454	Fail	
PEA-03	Thinker	Building 1	Owned and leased out	024594913689	2953454	Con	
PEA-02	Gideon One	Building A	Leased in	021658593058	2853454	Con	
PEA-01	Gideon One	Building 0	Leased in	021658593058	2753454		

Rows per page: 10

<API>

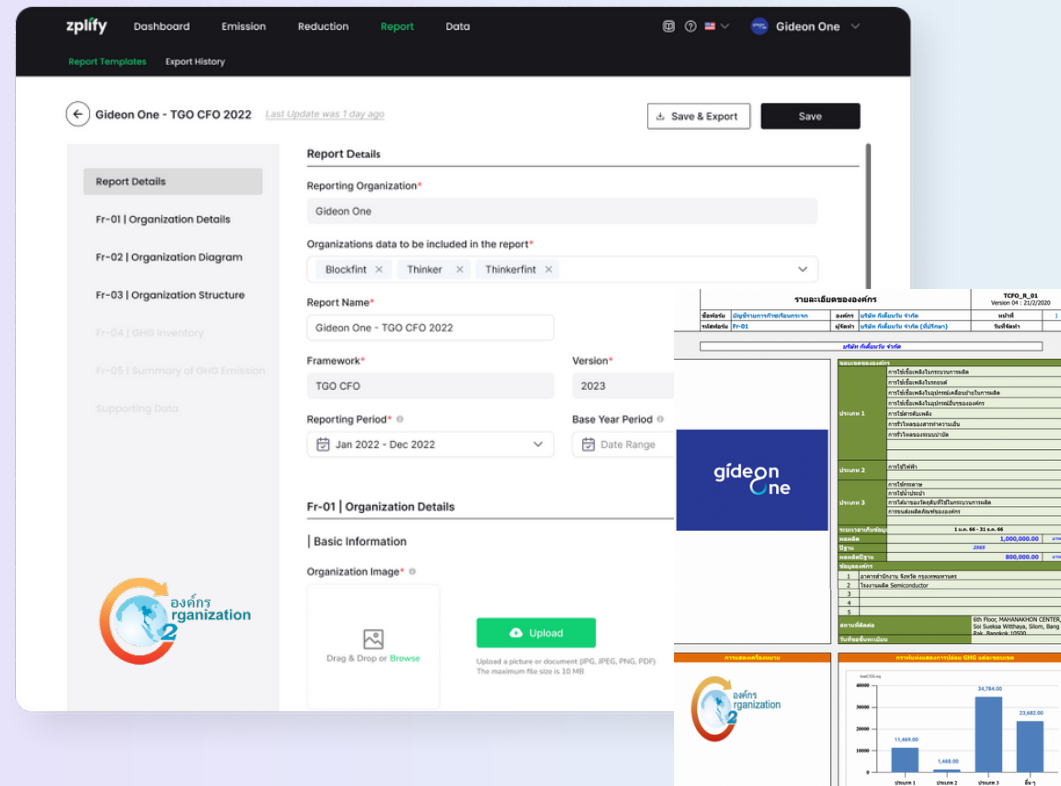
# On-Demand Reports

Generate auditable carbon reports for mandatory disclosure & stakeholder communication



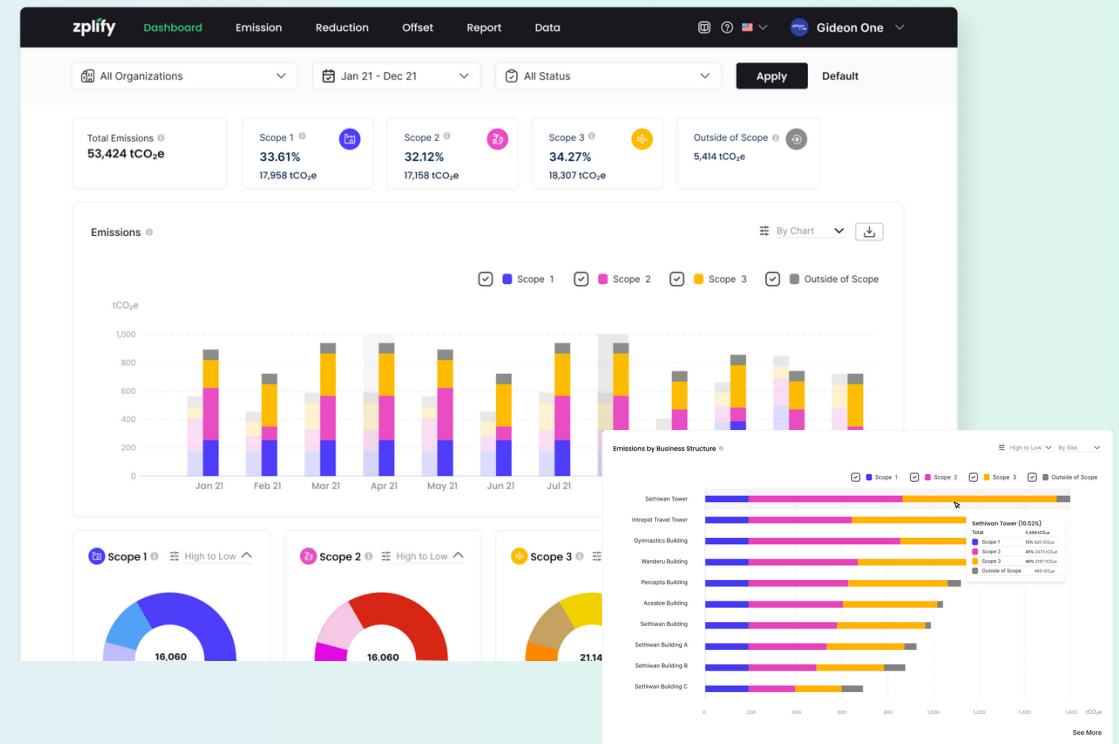
## One-Click Generated Report

- Generated CFO report with traceable evidence aligned with TGO, GHG Protocol, and ISO 14064 standards



## Interactive Scope 1, 2, & 3 Dashboards

- Interactive scope 1, 2, & 3 dashboards to gather valuable insights
- Granular data export of your emissions data into an excel format



# Reliable Data Quality

Enhance the precision and reliability of your emissions data

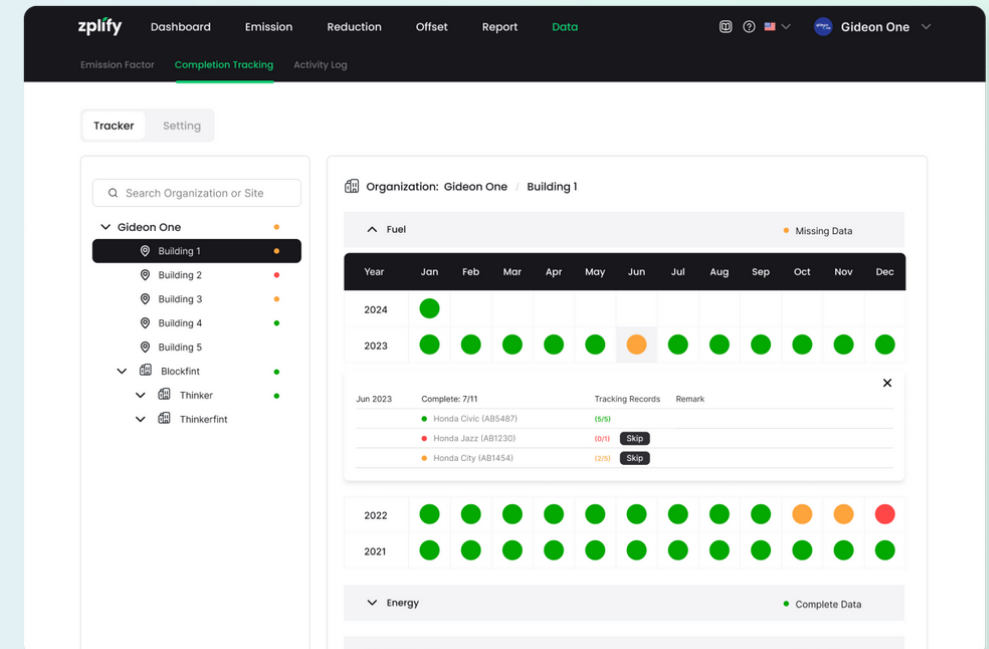
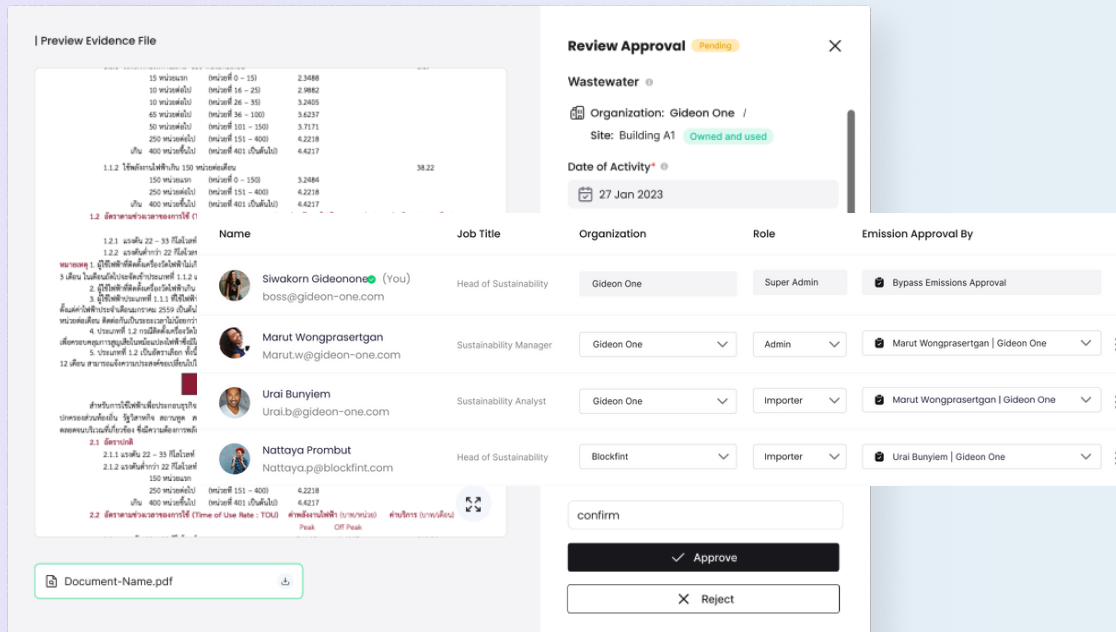


## Improve your data accuracy with Approval Workflow

- Setup your own data workflow for data submission and approval within your organization to ensure data integrity

## Data Completion Tracker

- Track your organization's data completeness across team members and departments





# Achieving Net-Zero



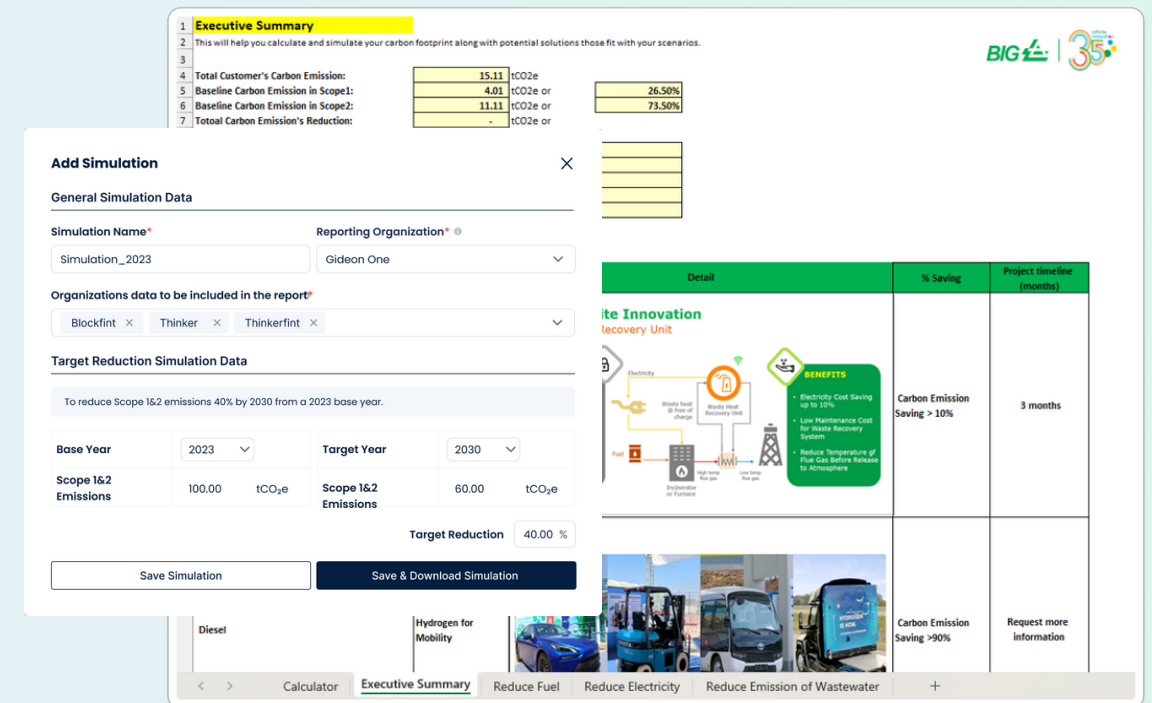
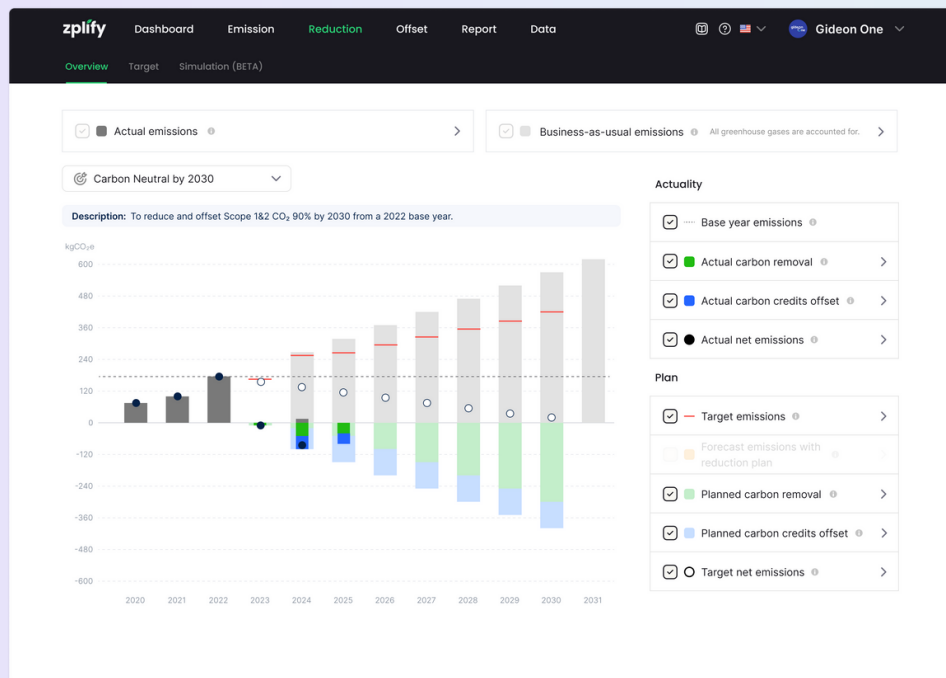
Kick-start your journey to net zero by setting targets and monitoring its progress with our powerful tools

## Set and Track Your Climate Targets

- Set target and plan your net zero journey ahead using SBTi, GHG Protocol, and TGO methodologies

## Simulate Your Reduction Plan

- Simulate scenarios with a suggested reduction plan and solutions from our partners & vendors



# zplify Platform

## STARTER

FREE

Forever

- ✓ Scope 1, 2, 3 auto calculations
- ✓ 5 users, 1 GB
- ✓ ∞ orgs / sites / custom emission factors
- ✓ 1 meter for auto-sync electricity data from PEA / MEA API (3 months)
- ✓ API for auto-sync data
- ✓ Approval workflow
- ✓ Data visualization
- ✓ Data completion tracking
- ✓ Thai reporting framework
- ✓ Reduction plan simulation
- ✓ 1 climate target for reduction tracking

## PROFESSIONAL

฿33,400 / month Billed Annually

Everything in Free, and

- ✓ ∞ users, 20 GB
- ✓ 5 meters for auto-sync electricity data from PEA / MEA API
- ✓ International reporting frameworks
- ✓ ∞ climate targets for reduction tracking
- ✓ Reduction projects tracking
- ✓ Carbon footprint for product calculations
- ✓ Climate academy
- ✓ Platform training

## ENTERPRISE

Talk to Sales

Everything in Professional, and

- ✓ ∞ custom integrations
- ✓ ∞ custom user interfaces
- ✓ ∞ meters for auto-sync electricity data from PEA / MEA API
- ✓ ∞ custom dashboards
- ✓ Automated data capture with OCR
- ✓ Dedicated sustainability consultant

© 2024 Gideon One. All Rights Reserved.

# Demonstration

## ZPLIFY

---



สำหรับการลงทะเบียน ให้เข้าไปที่ “[www.zplify.com](http://www.zplify.com)”

The image shows the zplify website interface. At the top right, there is a navigation bar with 'EN', 'TH', 'Login', and a 'Get It Free' button. A green box highlights this button, with an arrow pointing down to a larger, more prominent 'Get It Free' button on the main content area. Below the main heading, there are two buttons: 'Get It Free' and 'Schedule a Demo'. The main content area features a dashboard preview with various charts and data. On the right side, there is a text overlay in Thai: 'คลิก “Get It Free”' (Click “Get It Free”).

zplify Platform Pricing Services Documentation Contact

EN TH Login [Get It Free](#)

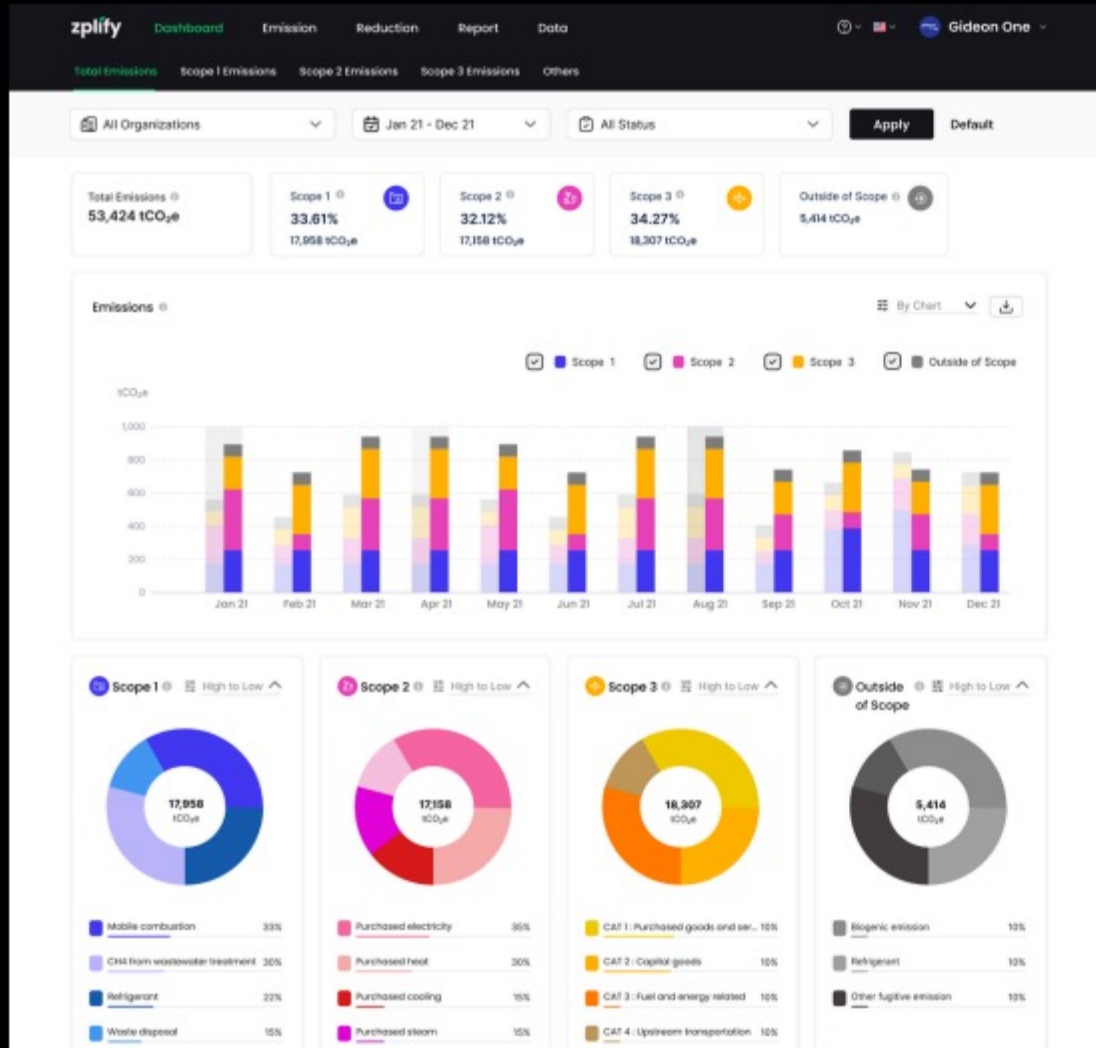
## Simplify your journey to Net Zero

Measure, reduce, offset, and report greenhouse gases in your organizations without being an expert.  
Comply with international standards, [Greenhouse Gas Protocol](#) and [ISO 14064](#).

[Get It Free](#) [Schedule a Demo](#)

คลิก “Get It Free”

# Dashboard แสดงข้อมูล Emission ภาพรวม



← ภาพรวม Emission รายเดือน

← ภาพรวม Emission ราย Scope

# Emission สำหรับการนำเข้าข้อมูลกิจกรรมเพื่อคำนวณ Emission

ประเภทกิจกรรมการปล่อย

zply Dashboard Emission Reduction Offset Report Data

Input: Import File API Eco-Efficiency

Records: 10,000 records Emission: 12,892.88 tCO<sub>2</sub>e Scope 1: 3,223.22 tCO<sub>2</sub>e Scope 2: 3,223.22 tCO<sub>2</sub>e Scope 3: 3,223.22 tCO<sub>2</sub>e Outside of Scope: 3,223.22 tCO<sub>2</sub>e

ID	Date of Activity	Site	Emission Group	Emission Factor Publisher	Emission Source	Amount	Unit	Emissions (CO <sub>2</sub> e)	File	Approval	Created by
EM-18	Jan 2022 - Feb 2022	Warehouse 1	Outsourcing Waste (Support In operating)	Aggregates - Landfill	Aggregates - Landfill	100.00	tonne	30.75 kg		Pending by Sivanon GL...	You
EM-14	Jan 2022 - Feb 2022	Warehouse 1	Outsourcing Waste (Support End of life)	Aggregates - Landfill	Aggregates - Landfill	1.00	tonne	305.75 kg		Pending by Sivanon GL...	Mand Wong...
EM-13	Jan 2022 - Feb 2022	Warehouse 1	Fuel	Urban gasifier 30%	LPG	1,000.00	kg	305.75 kg		Approved by Sivanon GL...	You
EM-12	Jan 2022 - Feb 2022	Building 1	Fuel	Urban gasifier 30%	Gasoline/Petrol	1,000.00	kg	305.75 kg		Approved by Sivanon GL...	Mand Wong...
EM-11	Jan 2022 - Feb 2022	Warehouse 1	Refrigerants	TSD	HFC-23 (R-23)	1,000.00	kg	305.75 kg		Draft	You
EM-10	Jan 2022 - Feb 2022	Building 1	Other Fugitive Emissions	TSD	Trichloromethane (Stouffure)	1,000.00	kg	305.75 kg		Draft	Mand Wong...
EM-9	Jan 2022 - Feb 2022	Building 1	Wastewater	TSD	อุตสาหกรรมผลิต - Reactor ผลิตสารเคมี	1,000.00	kg	305.75 kg		Draft	Mand Wong...
EM-8	Jan 2022 - Feb 2022	Building 1	Wastewater	TSD	Oxidation Ditch	1,000.00	kg	305.75 kg		Rejected by Sivanon GL...	You

Rows per page: 10 1-3 of 3

← Add Emission (2/3) ×

Select Emission Group\*

Energy

Fuel

Manual Input



Import Excel



API Connection

วิธีการนำเข้าข้อมูล



## Report สำหรับการสร้างรายงานสิ่งแวดล้อมที่ต้องการ

zplyfy

DashboardEmissionReductionReportData

Report TemplatesExport History

←Gideon One - TGO CFO 2022Last updated: 2023-07-05 1:02 AM

Save & ExportSave

Report Details

Fr-01 | Organization Details

Fr-02 | Organization Diagram

Fr-03 | Organization Structure

Fr-04 | GHG Inventory

Fr-05 | Emission and Data Collection

Supporting Data

Report Details

Reporting Organization\*

Gideon One

Organizations data to be included in the report\*

BookEnd x Thinker x ThinkerEnd x

Report Name\*

Gideon One - TGO CFO 2022

Framework\*

TGO CFO

Version\*

2023

Reporting Period\* ⇅

Jan 2022 - Dec 2022


Base Year Period ⇅

Date Range

Fr-01 | Organization Details

Basic Information

Organization Image\* ⇅

Drop & Drop or [Browse](#)

Upload

Upload a picture in document (JPG, PNG, PNG, PDF)  
The maximum file size is 10 MB

Report ⇅

Creator Name\* ⇅

Propriety Williamson

Report Date\* ⇅

31 Jan 2023

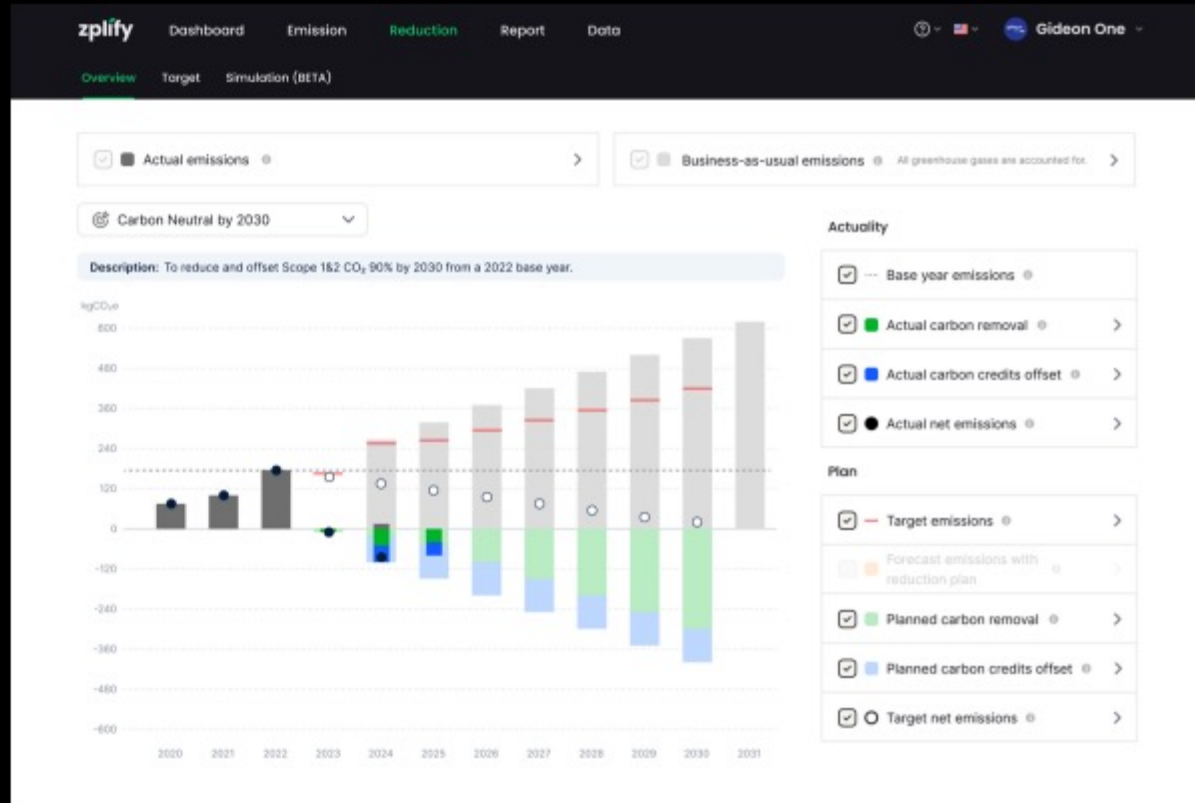
Yield of Reporting Period\* ⇅

Select Yield of Reporting Period

**TGO CFO រូបបែប Excel file**

[illegible]

# Reduction นำข้อมูล Emission มาวางแผนสู่ Net Zero







## Point of No Return

Breaking **tipping points** could potentially commit the world to **long-term irreversible changes**.



© 2024 Gideon One. All Rights Reserved



# Thank You



**Mr. Thanawat Chonghipatmongkol**  
Expert in Renewable Energy and Environment

Business Analyst at Gideon One Co., Ltd.



กรณีศึกษาจาก

บัญชีการเงินสู่บัญชีคาร์บอนของ **SAP Business One**

Case Study: From Financial Accounting to Carbon Accounting with SAP Business One

**Ms. Suratchanee Thongkum**

Senior ERP Consultant  
Sundae Solutions Co., Ltd.

**Mr. Kittanan Tantiyamas**

ERP Consultant  
Sundae Solutions Co., Ltd.





# Integration ERP data with Emission Management Platform



## Finance

Leverage your existing financial data to automatically generate accurate carbon estimates based on expenditure.



## Manufacturing

Access emissions insights on raw materials, energy use, and manufacturing processes, so customers can optimize their operations and reduce their footprint.



## Human Resource

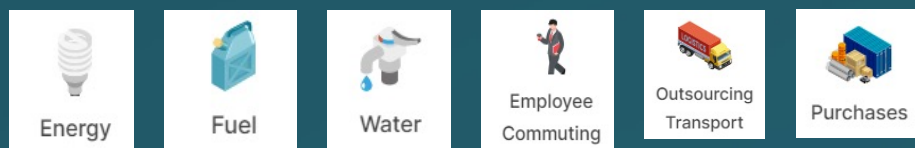
how remote vs. on-site work impacts carbon emissions to inform decisions on office leases, business travel, and flexible work arrangements.



## CRM

Capture and share order-level emissions data with customers to drive transparency and build stronger brand relationships.





Add-on: Zplify Integration

How does the integration work?



# ตัวอย่างข้อมูลกลุ่มการปล่อย GHGs ใน COA และ Carbon Emission Scopes

No	zply	SAP Business One				
		Item Group	Account code	Item Code	Description	UOM
1	พลังงาน (Energy)	พลังงาน (Energy)	610000 - Electricity	GHGs-ENER001	ไฟฟ้า	kWh
2	เชื้อเพลิง (Fuel) - เครื่องจักร	เชื้อเพลิง (Fuel) - เครื่องจักร	630030 - Machinery Fuel & Oil	GHGs-FUMC001	น้ำมันดีเซล	litre
				GHGs-FUMC002	ไบโอดีเซล	litre
				GHGs-FUMC003	แก๊สโซฮอล์ 95	litre
3	น้ำ (Water)	น้ำ (Water)	610010 - Water	GHGs-WATE001	น้ำประปา-การประปานครหลวง	m3
				GHGs-WATE002	น้ำประปา-การประปาสวนภูมิภาค	m3
				GHGs-WATE003	น้ำประปา-การนิคมอุตสาหกรรม	m3
4	การเดินทางของพนักงาน (Employee Commuting)	การเดินทางของพนักงาน (Employee Commuting)	625110 - Travel Costs - Employee	GHGs-EMPC001	รถยนต์ทั่วไป - รถยนต์ส่วนตัว - น้ำมันเบนซิน	km
				GHGs-EMPC002	รถยนต์ทั่วไป - รถยนต์ส่วนตัว - ดีเซล	km
				GHGs-EMPC003	รถไฟฟ้า - รถไฟฟ้า (MRT, BTS)	km per passenger



## ตัวอย่างบันทึกข้อมูลการปล่อย GHGs - กลุ่มพลังงาน

[illegible]



# ตัวอย่างบันทึกข้อมูลการปล่อย GHGs - กลุ่มเชื้อเพลิงเครื่องจักรในการผลิต



Outgoing Payments

To Order of:

Pay To:

☐ Vendor  
☐ Customer  
☒ Account

No. Primary: 538  
Posting Date: 19.06.24  
Due Date: 19.06.24  
Document Date: 19.06.24  
Reference:   
Transaction No. ➡ 6783

Project:

Doc. Currency:

Referenced Document:

Contents Attachments

#	G/L Account	Account Name	Doc. Remarks	Tax Definition	Net Amount	Line of Busi...	GHGs Fixed Asset	GHGs Item	GHGs Value	GHGs UOM
1	➡ 630030	Machinery Fuel & Oil	ค่าน้ำมันเครื่องจักร		GBP 1,650.00		เครื่องปอกเปลือก	➡ GHGs-FUMC001	50.00	litre

Net Total: GBP 1,650.00  
Total Tax:   
Total Amount Due: GBP 1,650.00

## ตัวอย่างบันทึกข้อมูลการปล่อย GHGs - กลุ่มน้ำ

[illegible]

# ตัวอย่างบันทึกข้อมูลการปล่อย GHGs - กลุ่มการเดินทางของพนักงาน



**Outgoing Payments**

To Order of:   
Pay To:

☐ Vendor  
☐ Customer  
☒ Account

No. Primary 536  
Posting Date 19.06.24  
Due Date 19.06.24  
Document Date 19.06.24  
Reference  
Transaction No. ➔ 6781

Project:   
Doc. Currency:

Referenced Document

Contents Attachments

#	G/L Account	Account Name	Doc. Remarks	Tax Definition	Net Amount	Line of Business	GHGs Fixed Asset	GHGs Item	GHGs Value	GHGs UOM
1	➔ 625110	Travel Costs - Employee	ค่าน้ำมันรถยนต์ส่วนตัวไป on-site		GBP 600.00			➔ GHGs-EMPC001	150.00	km

Net Total: GBP 600.00  
Total Tax:  
Total Amount Due: GBP 600.00



# ข้อมูล Emission จาก SAP Business One จะถูกส่งเข้าระบบ Emission Management โดยอัตโนมัติ



กรอกข้อมูล / การปล่อย GHGs

?

TH

Sundae

Q

กรอง

🔗 คอลัมน์

📄 สร้างรายงาน

รายการ: 6 รายการ

การปล่อย GHGs: 2.68 tCO<sub>2</sub>e

🏢 ขอบเขตที่ 1: 135.39 kgCO<sub>2</sub>e

🔥 ขอบเขตที่ 2: 2.02 tCO<sub>2</sub>e

✚️ ขอบเขตที่ 3: 519.64 kgCO<sub>2</sub>e

นอกขอบเขต: 0.00 kgCO<sub>2</sub>e

ID	วันที่เกิดกิจกรรม	ชื่อไซต์	ประเภทของแหล่งที่มา	ผู้เผยแพร่ค่าการปล่อย GHGs	แหล่งที่มา	ปริมาณ	หน่วย	การปล่อย GHGs (CO <sub>2</sub> e)
EM-6	มี.ย. 2024	Sundae Head Office	การเดินทางของพนักงาน	DEFRA	Car	150.00	km	25.57 kg
EM-5	มี.ย. 2024	Sundae Head Office	เชื้อเพลิง	TGO	Diesel	50.00	litre	150.24 kg
EM-4	มี.ย. 2024	Sundae Head Office	น้ำ	TGO	Tap Wate...	100.00	m3	79.48 kg
EM-3	มี.ย. 2024	Sundae Head Office	พลังงาน	TGO	Electricity...	3,500.00	kWh	2.10 t

# Carbon Accounting System Integration Benefits



## Centralized Data Management

**Benefit:** Integration consolidates financial, operational, and environmental data into a single platform.

**Impact:** Provides a holistic view of the organization's performance, facilitating better decision-making and streamlined reporting processes.

## Enhanced Compliance and Reporting

**Benefit:** Automated data transfer ensures that emission data is accurately captured and readily available for compliance with environmental regulations.

**Impact:** Simplifies the process of generating sustainability reports, ensuring transparency and reducing the risk of non-compliance penalties.

## Operational Efficiency

**Benefit:** Integration eliminates the need for manual data entry and reconciliation between ERP and emission management systems.

**Impact:** Saves time and resources, reduces errors, and allows staff to focus on more strategic tasks rather than repetitive data management.

## Strategic Decision Support

**Benefit:** Access to integrated data from both ERP and emission management systems provides comprehensive insights into the environmental impact of business operations.

**Impact:** Supports strategic planning and decision-making by identifying areas for improvement, potential cost savings, and opportunities for reducing the carbon footprint.

# Thank You



**Ms. Suratchanee Thongkum**  
Senior ERP Consultant  
Sundae Solutions Co., Ltd.

**Mr. Kittanan Tantiyamas**  
ERP Consultant  
Sundae Solutions Co., Ltd.







x



Register Here



### Emissions Management Platform & Service



ฟรี แพลตฟอร์ม



ฟรี ออกรายงาน CFO



ฟรี Climate Training

+ ฟรี! ERP Integration



x



# zplify Platform

## STARTER

**FREE** Forever

- ✓ Scope 1, 2, 3 auto calculations
- ✓ 5 users, 1 GB
- ✓ 10 orgs / sites / custom emission factors
- ✓ 1 meter for auto-sync electricity data from PEA / MEA API
- ✓ API for auto-sync data
- ✓ Approval workflow
- ✓ Data visualization
- ✓ Data completion tracking
- ✓ Thai reporting framework
- ✓ Reduction plan simulation
- ✓ 1 climate target for reduction tracking

## PROFESSIONAL

**฿33,400 / month** Billed Annually

Everything in **Free**, and

- ✓ 10 users, 20 GB
- ✓ 5 meters for auto-sync electricity data from PEA / MEA API
- ✓ International reporting frameworks
- ✓ 10 climate targets for reduction tracking
- ✓ Reduction projects tracking
- ✓ Carbon footprint for product calculations
- ✓ Climate academy
- ✓ Platform training

## ENTERPRISE

**Talk to Sales**

Everything in **Professional**, and

- ✓ 10 custom integrations
- ✓ 10 custom user interfaces
- ✓ 10 meters for auto-sync electricity data from PEA / MEA API
- ✓ 10 custom dashboards
- ✓ Automated data capture with OCR
- ✓ Dedicated sustainability consultant



Scan me

ดาวน์โหลดเอกสาร

[fb.com/SundaeSolutions](https://fb.com/SundaeSolutions)





# THANK YOU

Sundae Solutions Co., Ltd.

T | +66 2634 8899

E | [sales@sundae.co.th](mailto:sales@sundae.co.th)

W | [www.sundae.co.th](http://www.sundae.co.th)

